



## THE OFFICES AT BEDMINSTER

500 & 550 HILLS DRIVE

### 500 HILLS DRIVE

#### SPACE AVAILABLE

Suite 230A: 5,585 RSF  
Suite 210A: 7,651 RSF

### 550 HILLS DRIVE

#### SPACE AVAILABLE

Suite 115B: 7,733 RSF  
Suite 110B: 7,287 RSF (Lease Out)  
Suite 200B: 34,077 RSF (Entire Floor)  
Suite 300B: 34,077 RSF (Entire Floor)

### RENTAL RATE

Call for quote

### FEATURES

- Two building, Class A office complex totaling 200,000 SF
- Amenities include: tenant lounge, meeting/conference center and fitness center
- The Village at Bedminster a 110,000 SF shopping center offers banking, restaurants, grocery and personal service options is located across the street
- On-site property management
- Covered executive parking
- Minutes from Bridgewater Commons Mall
- Access to Routes 78, 287, 202 and 206
- Energy Star rated, WiredScore Certified Gold and LEED certified

**[WWW.THEOFFICESATBEDMINSTER.COM](http://WWW.THEOFFICESATBEDMINSTER.COM)**

For more information, please contact exclusive leasing agents:

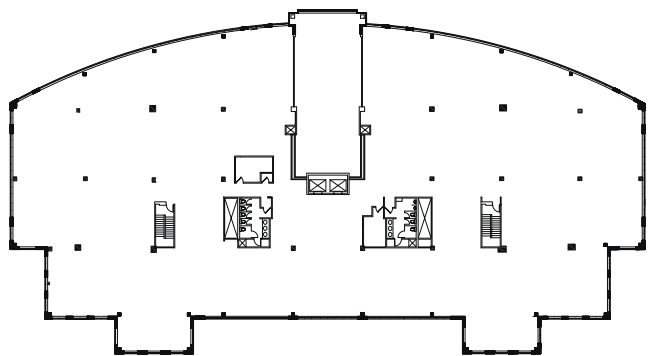
**Jeffrey L. Heller, SIOR**  
Principal & Managing Director  
D 973.753.1100  
C 973.699.4987  
jeff.heller@avisonyoung.com

**William E. McCaffrey**  
Principal  
D 973.753.1102  
C 201.826.8861  
william.mccaffrey@avisonyoung.com





550 HILLS DRIVE | 3RD FLOOR - SUITE 300



[WWW.THEOFFICESATBEDMINSTER.COM](http://WWW.THEOFFICESATBEDMINSTER.COM)

For more information, please contact exclusive leasing agents:

**Jeffrey L. Heller, SIOR**  
Principal & Managing Director  
D 973.753.1100  
C 973.699.4987  
jeff.heller@avisonyoung.com

**William E. McCaffrey**  
Principal  
D 973.753.1102  
C 201.826.8861  
william.mccaffrey@avisonyoung.com



1120 Headquarters Plaza | North Tower, 8th Floor | Morristown, NJ 07960 | T 973.898.6360 | F 973.898.9062 | [www.avisonyoung.com](http://www.avisonyoung.com)

The information contained herein was obtained from sources deemed reliable and is believed to be true; it has not been verified and as such, cannot be warranted nor form any part of any future contract.